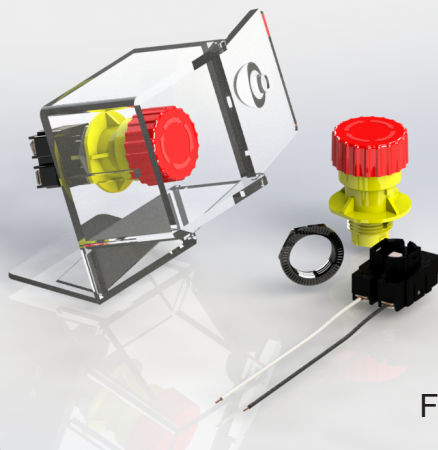


# New Product MODEL No.11204-01



## Emergency Stop Button



- Resin-based push-lock switch
- The button locks into place after it is pushed and is unlocked again by rotating.
- The button is waterproof (IP67).
- Circuits are ON-OFF (normally closed) and DPST.
- Special nut for use up to 3mm panel thickness is included.
- Wire harness is to be fastened to the switch with screws only.

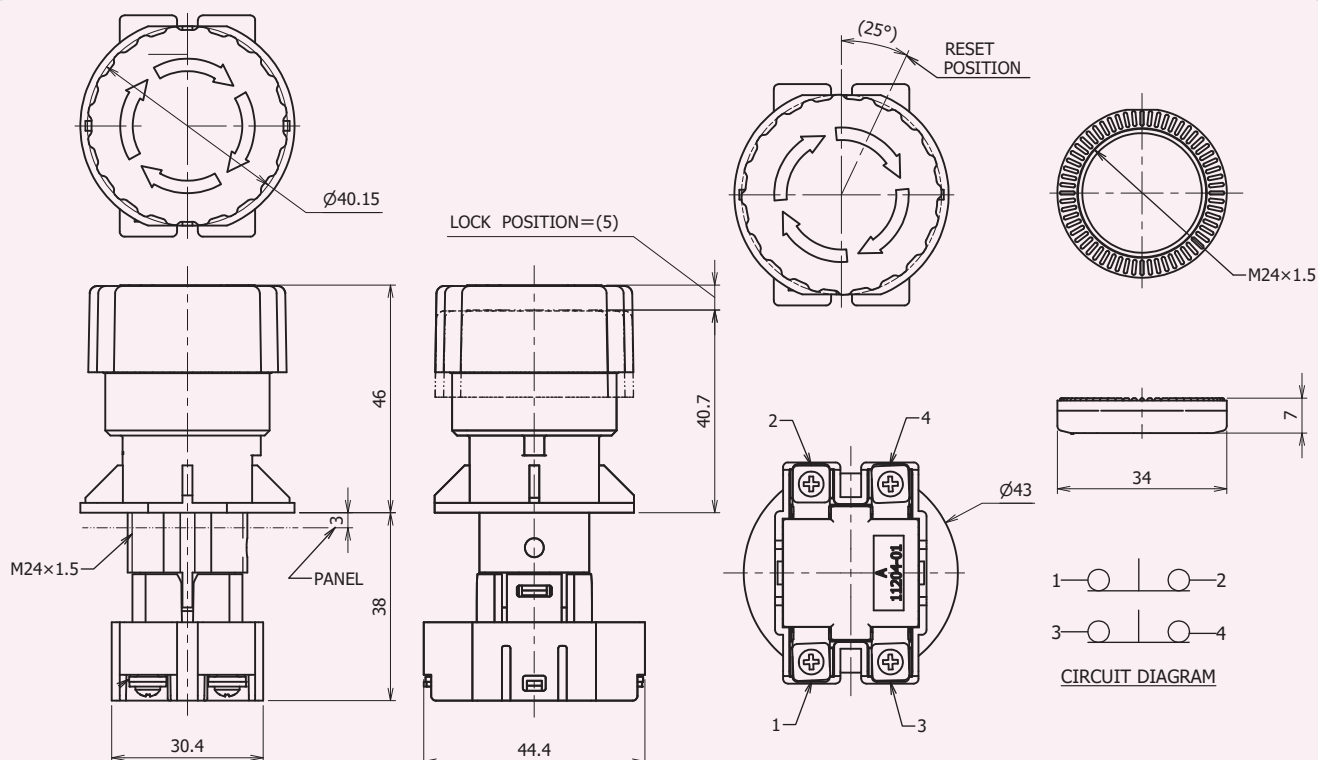
For more information, please contact your sales representative.

| Operating performance  | Standard       |
|------------------------|----------------|
| Operating force        | 35N            |
| Operating angle        | 25°            |
| Terminal type          | Screw mounting |
| Switch characteristics | ON-OFF, DPST   |

| Electrical performance | Standard                        |
|------------------------|---------------------------------|
| Maximum rating         | DC24V, 3A                       |
| Insulation resistance  | DC500V (megger) 10MΩ and above  |
| Withstand voltage      | AC500V for one minute           |
| Contact resistance     | 100mΩ and below (initial value) |

| Durability performance      | Standard    |
|-----------------------------|-------------|
| Load life                   | 1,000 times |
| No-load life                | 1,000 times |
| Operating temperature range | -10~55°C    |
| Storage temperature range   | -30~85°C    |

### Exterior measurements (mm)



**ミヤマ電器株式会社**  
MIYAMA ELECTRIC CO., LTD.

〒145-0064 4-7-1 Kami-ikedai, Ohta-ku, Tokyo, Japan  
URL <http://www.miyama-electric.com>

• The specifications outlined herein are subject to change without notice.