

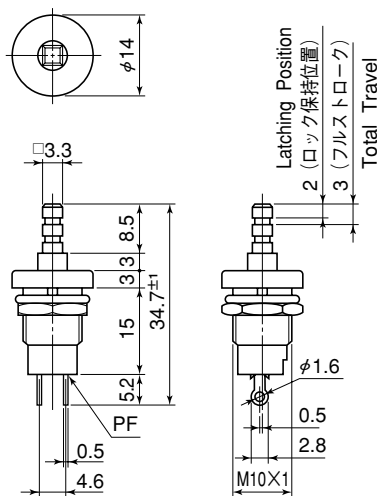
Product Description

商品説明

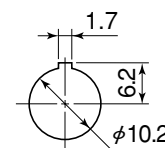
Number 品番	DS-481	Types 種類	Push button switch 押釦スイッチ	Photo 写真
Circuit 回路	SPST (2P)	Operation 機能	OFF - (ON)	
Rating 定格	3A.125V.AC 1A.250V.AC	Terminal 端子		
Insulation resistance 絶縁抵抗	DC.500V/100MΩ or more	Voltage breakdown 耐電圧	AC.1,500V/1min	
Contact resistance 接触抵抗	20m Ω or less	Exterior 外観	Resin button 樹脂ボタン	



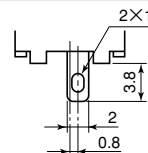
Dimensions 寸法図



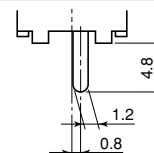
取付穴参考寸法 Mounting Hole



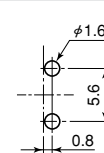
ハンダ端子(S)
Solder Terminal



PC端子(P)
PC Terminal

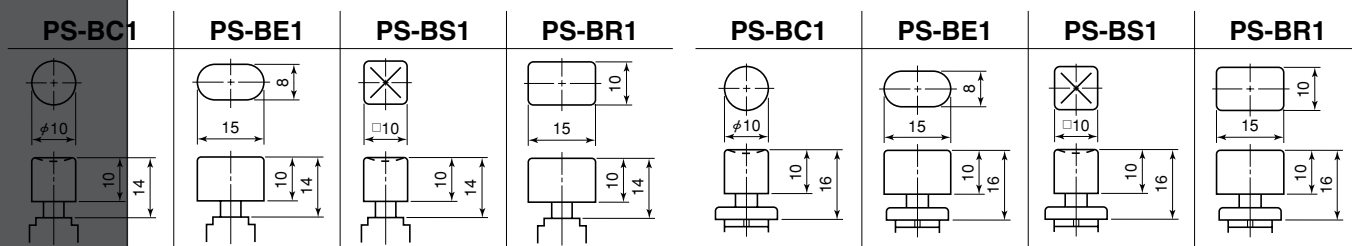


PC端子
取付穴参考寸法
PC Terminal
Mounting Hole



Details 詳細

別売操作ボタン品番/How to show Shape of Button



	ボタンカラー	Cap Color	
R	赤	Red	○
K	黒	Black	○
N	グレー	Gray	△

注記 (NOTE)
○=標準色 Standard
△=受注生産 Only for large quantity order